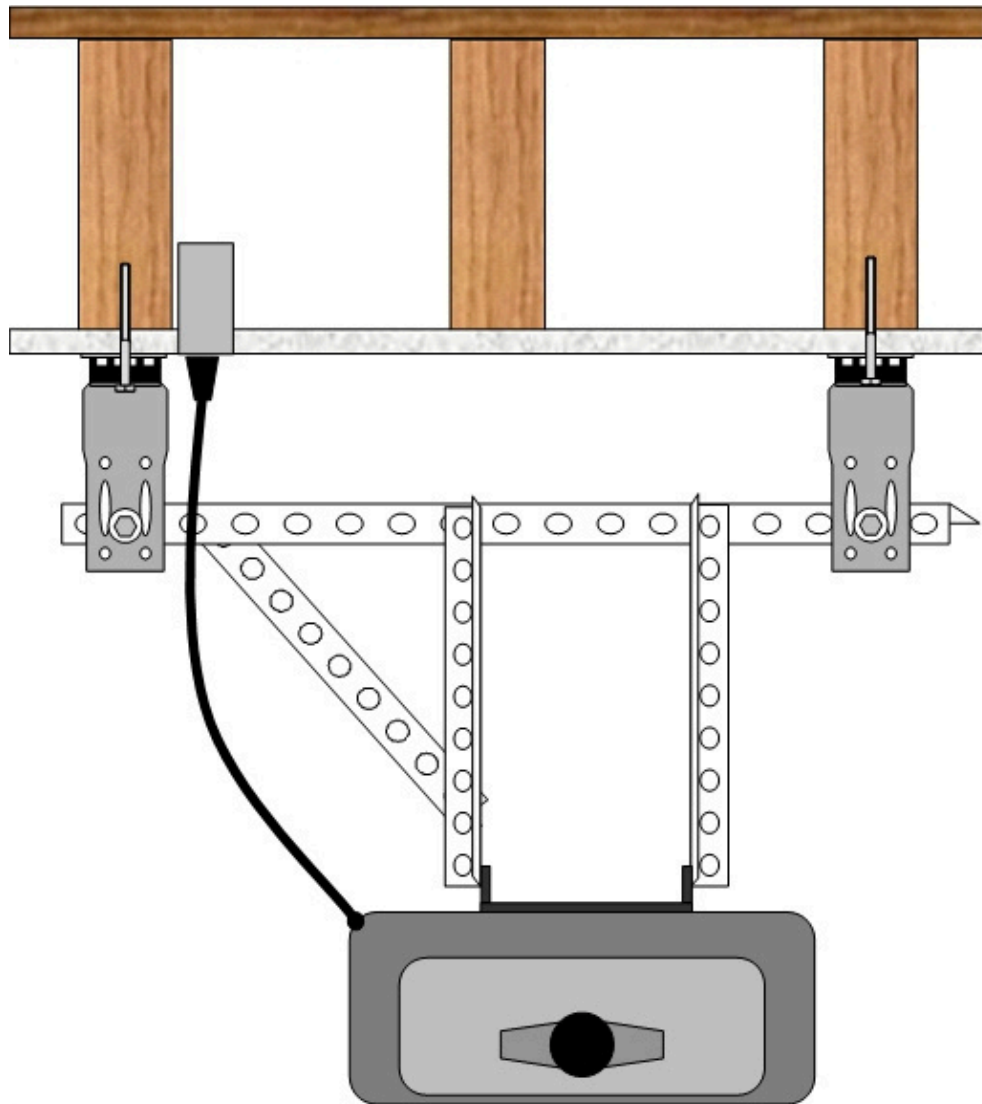


PAC International



REAL SOLUTIONS IN CONSTRUCTION

NOISE CONTROL SOLUTIONS



RSIC®-GDS

PAC International, LLC.
World Class Noise Control Solutions
Canby, OR – Las Vegas, NV
866-774-2100
info@pac-intl.com
www.pacinternationallc.com

GARAGE DOOR ISOLATION SYSTEM



The RSIC Garage Door Isolation System is a garage door kit that reduces sounds and vibrations generated by the motor and rails from entering the space above. This GDS kit offers a universal design that is compatible with most residential applications. This isolation system is easy to install and offers customers a quiet solution for existing and new construction. This kit is the perfect solution for garage door motors that are placed under a child's bedroom, in-law suite, bonus room, office, or any other space that should be acoustically sound.



**WORKING FROM HOME
ABOVE YOUR GARAGE
DOOR?**

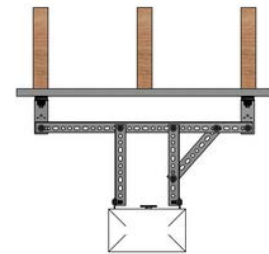


SPECIFICATIONS

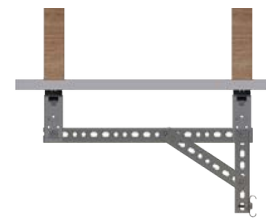
Acoustical Design Load	144 Lbs
Total Deflection at Load	3 mm
Adjustment Limit	Bracket Length
Use in Ceilings	Yes
Use in Walls	No
Use in New Construction	Yes
Use in Retrofit	Yes

OPTIONS

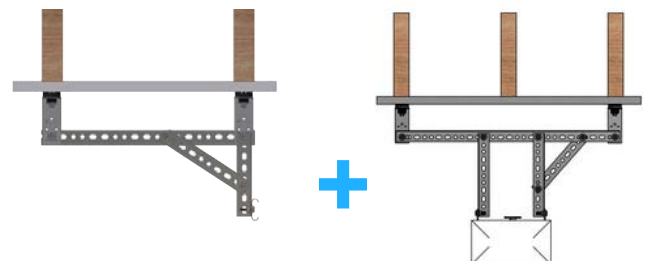
- 1. RSIC™ Garage Door Motor Isolation Kit**
Includes isolators for mounting the garage door motor

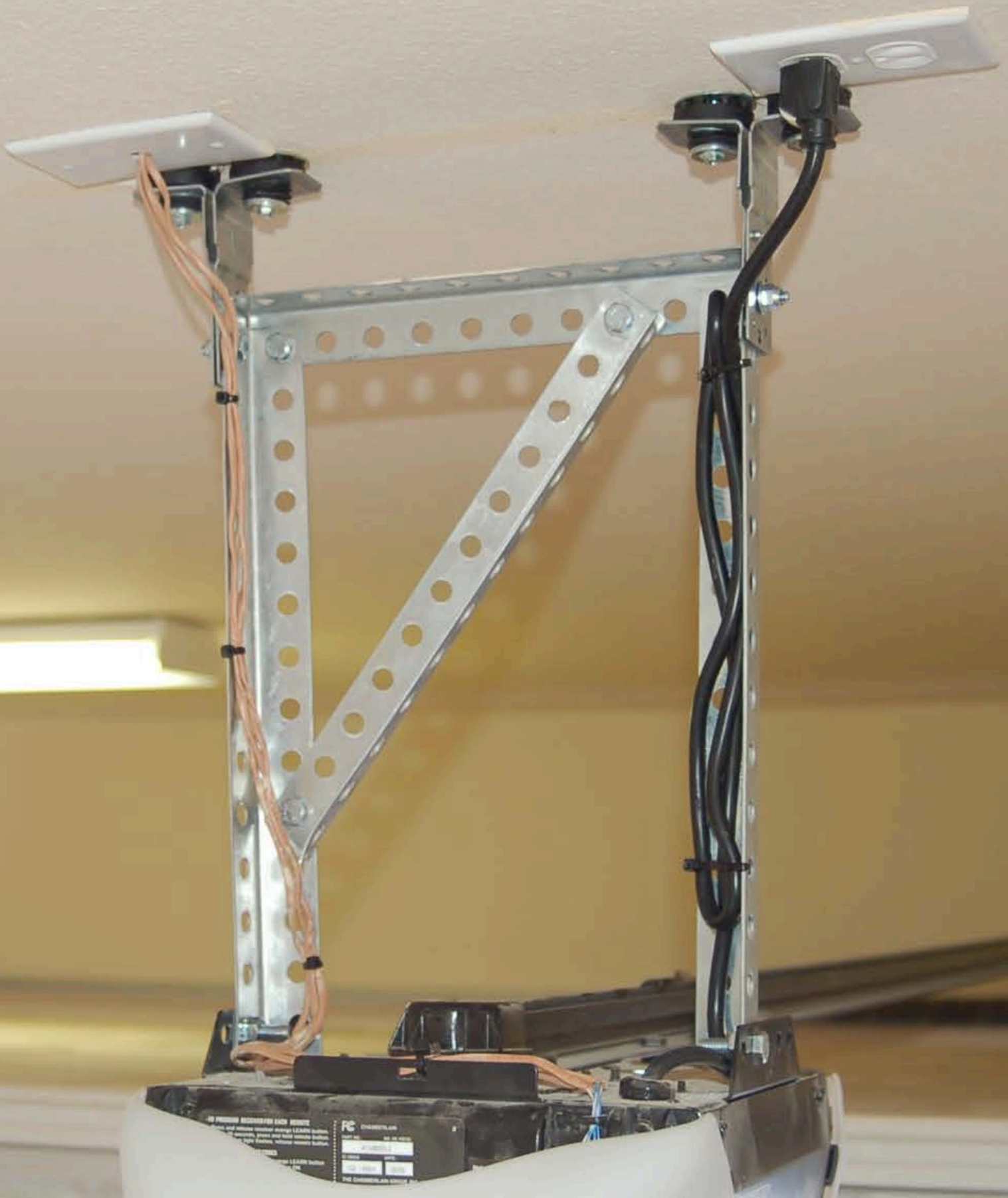


- 2. RSIC™ Garage Rail Isolation Kit**
Includes isolators for mounting the garage door rails



- 3. RSIC™ Garage Complete Isolation Kit**
Includes isolators for mounting the garage door motor and the garage door rails





WHO CAN BENEFIT?

Anyone Working From Home



Anyone With Kids or Babies



Anyone With Alert Barking Dogs



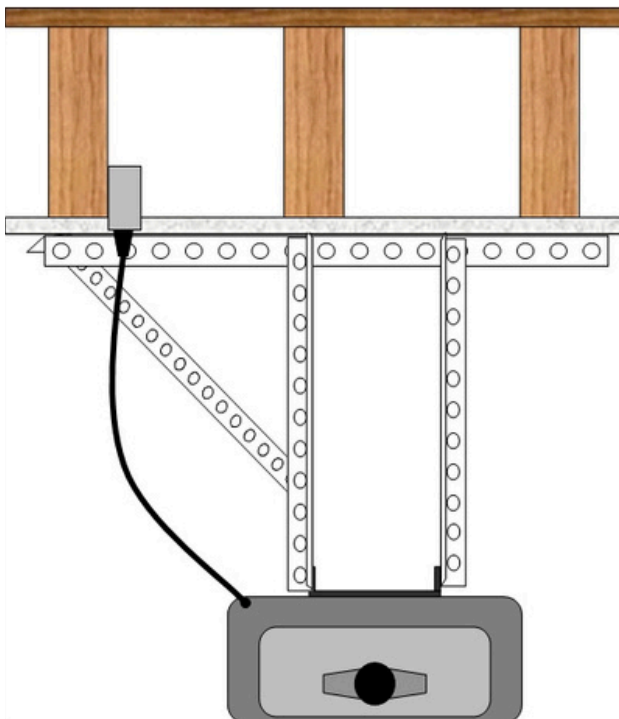
Anyone Who Wants A Quieter Environment



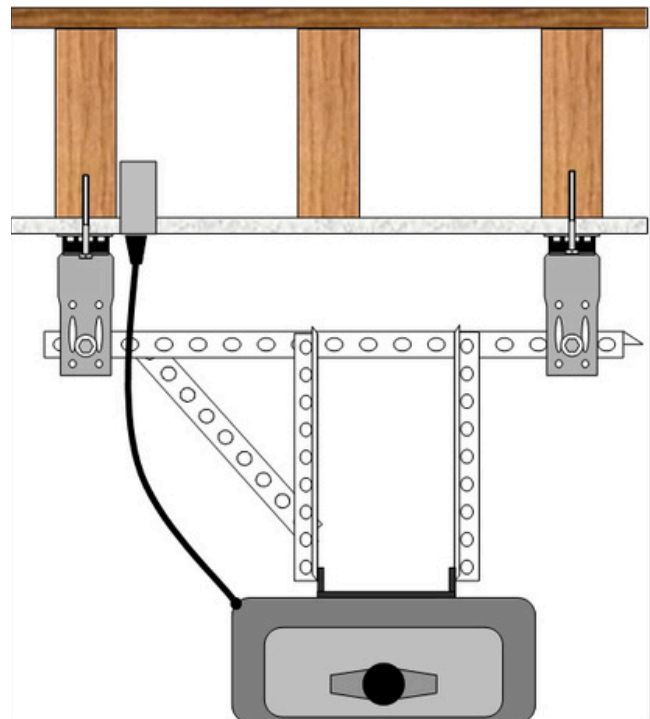
Over the years PAC has heard numerous complaints from customers about garage door motors that produce significant amounts of sounds and vibrations, causing disruption of your household's tranquility.

The RSIC-GDS Garage Door Opener Soundproofing Kit is installed between the ceiling and the operator motor to reduce the amount of vibrations (NOISE) that gets into the structure of your home and the room above. This helps to reduce the loud, sudden noise associated with opening and closing the garage door.

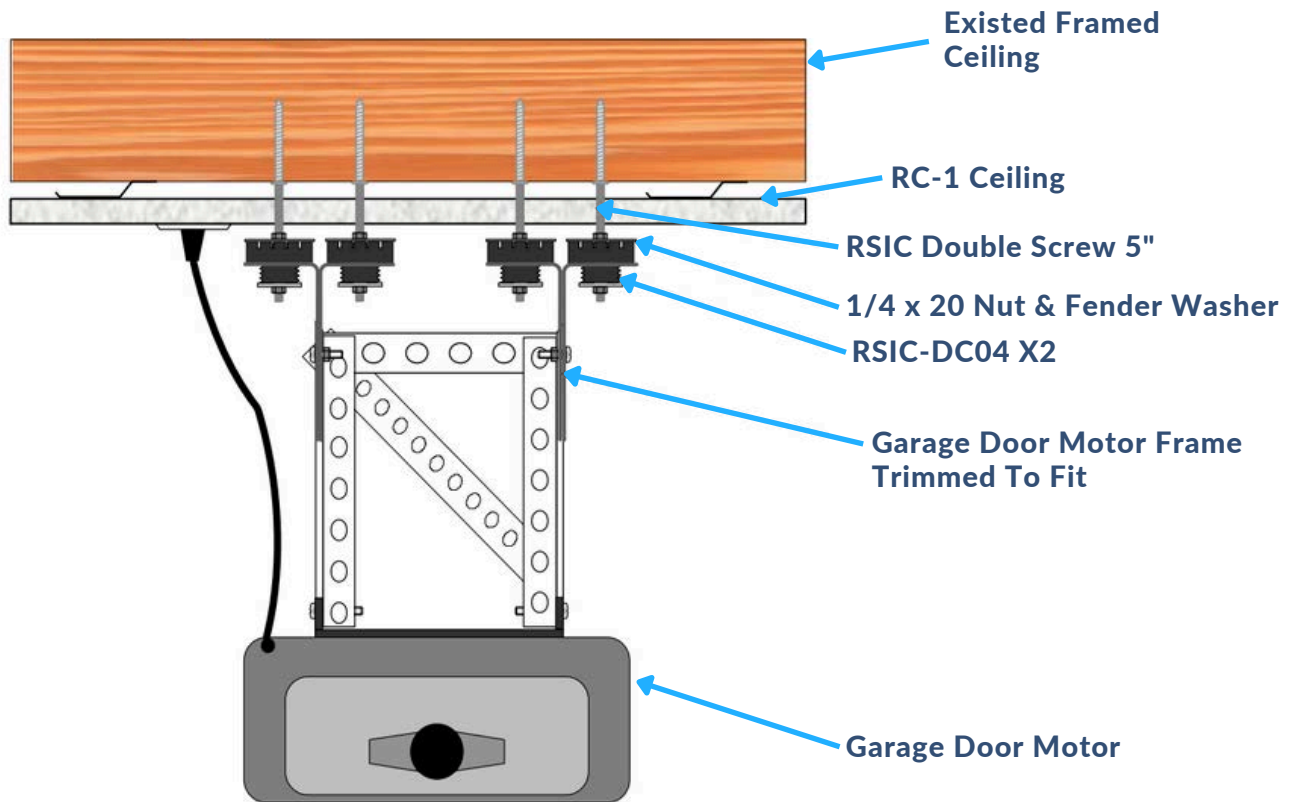
BEFORE



AFTER

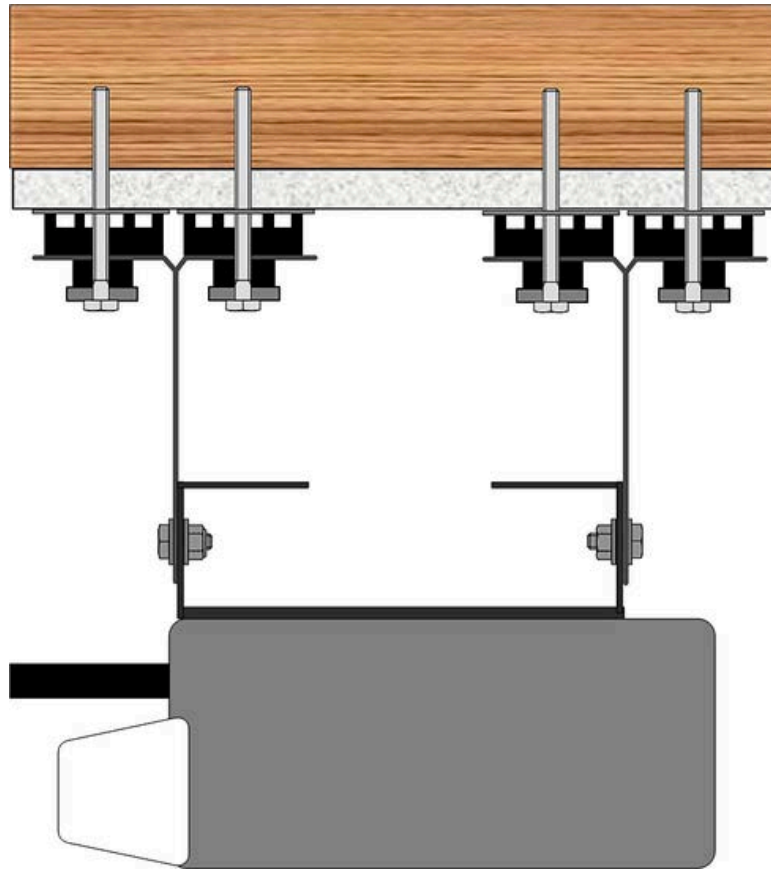


RSIC-GDS RETROFIT OVER RESILIENT SYSTEMS



UNIQUE DESIGN COMPATIBLE WITH RESIDENTIAL GARAGE DOORS

- Genie
- LiftMaster
- CloPlay
- Amarr
- Overhead Door
- Raynor
- Craftsman
- 1st United Door
- Wayne Dalton
- Chamberlain
- C.H.I Overhead Doors
- Sears
- Unique Garage Door
- Stanley
- Linear



Reduces the loud, sudden noise associated with opening and closing the garage door



Offers quiet solution for existing and new construction



Universal design compatible with most residential applications



Preserves the tranquility of your home

