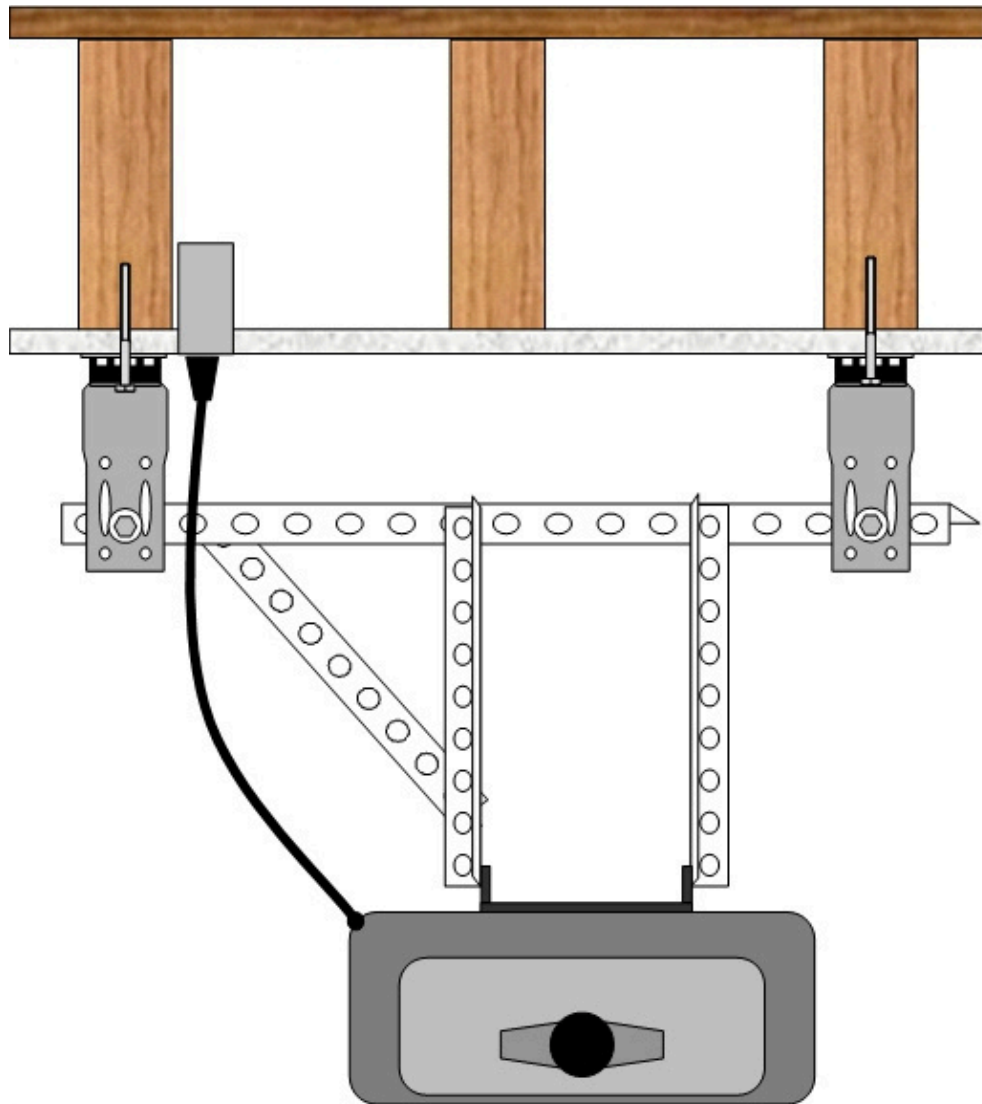


# PAC International



REAL SOLUTIONS IN CONSTRUCTION

## NOISE CONTROL SOLUTIONS



# RSIC®-GDS

PAC International, LLC.  
World Class Noise Control Solutions  
Canby, OR – Las Vegas, NV  
866-774-2100  
info@pac-intl.com  
www.pacinternationallc.com

# GARAGE DOOR ISOLATION SYSTEM



The RSIC Garage Door Isolation System is a garage door kit that reduces sounds and vibrations generated by the motor and rails from entering the space above. This GDS kit offers a universal design that is compatible with most residential applications. This isolation system is easy to install and offers customers a quiet solution for existing and new construction. This kit is the perfect solution for garage door motors that are placed under a child's bedroom, in-law suite, bonus room, office, or any other space that should be acoustically sound.



**WORKING FROM HOME  
ABOVE YOUR GARAGE  
DOOR?**

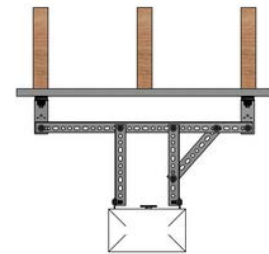


## SPECIFICATIONS

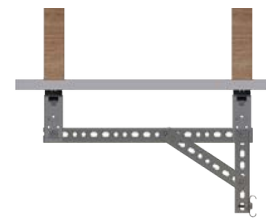
|                          |                |
|--------------------------|----------------|
| Acoustical Design Load   | 144 Lbs        |
| Total Deflection at Load | 3 mm           |
| Adjustment Limit         | Bracket Length |
| Use in Ceilings          | Yes            |
| Use in Walls             | No             |
| Use in New Construction  | Yes            |
| Use in Retrofit          | Yes            |

## OPTIONS

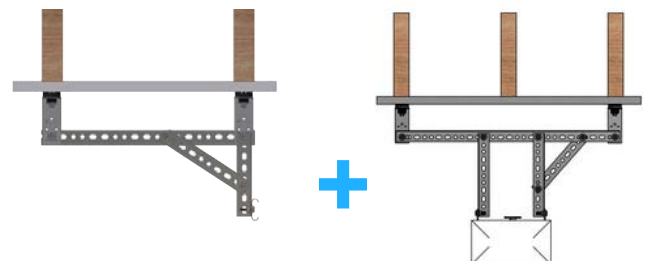
- 1. RSIC™ Garage Door Motor Isolation Kit**  
*Includes isolators for mounting the garage door motor*

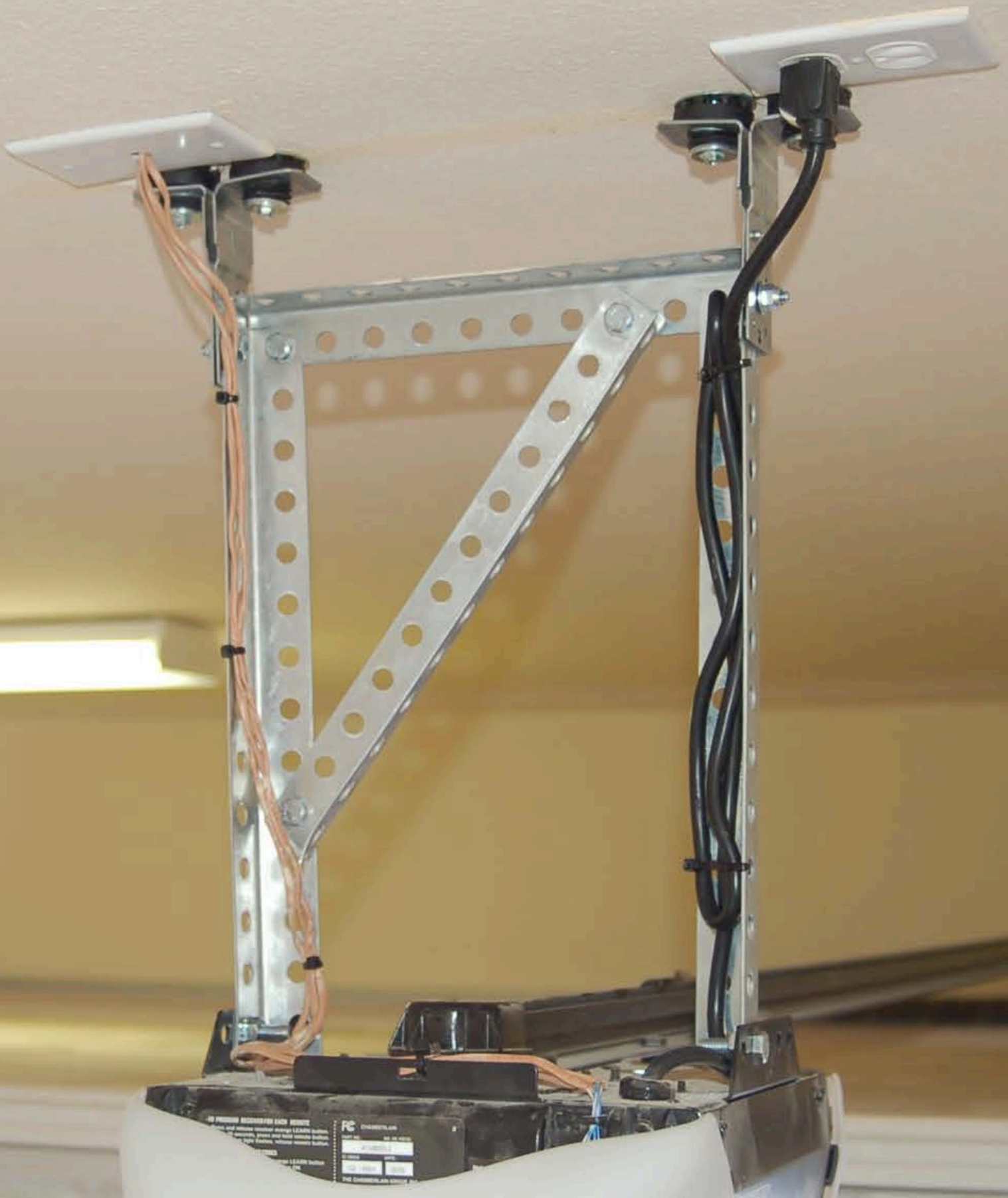


- 2. RSIC™ Garage Rail Isolation Kit**  
*Includes isolators for mounting the garage door rails*



- 3. RSIC™ Garage Complete Isolation Kit**  
*Includes isolators for mounting the garage door motor and the garage door rails*





## WHO CAN BENEFIT?

Anyone Working From Home



Anyone With Kids or Babies



Anyone With Alert Barking Dogs



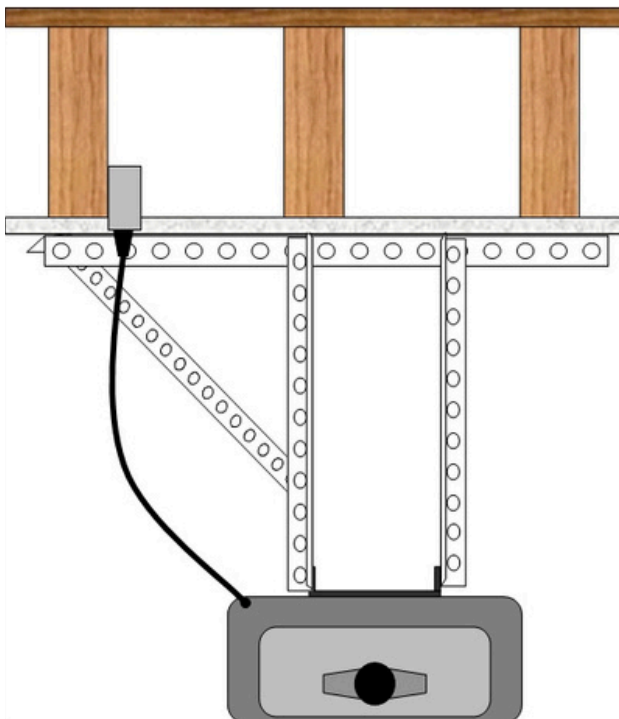
Anyone Who Wants A Quieter Environment



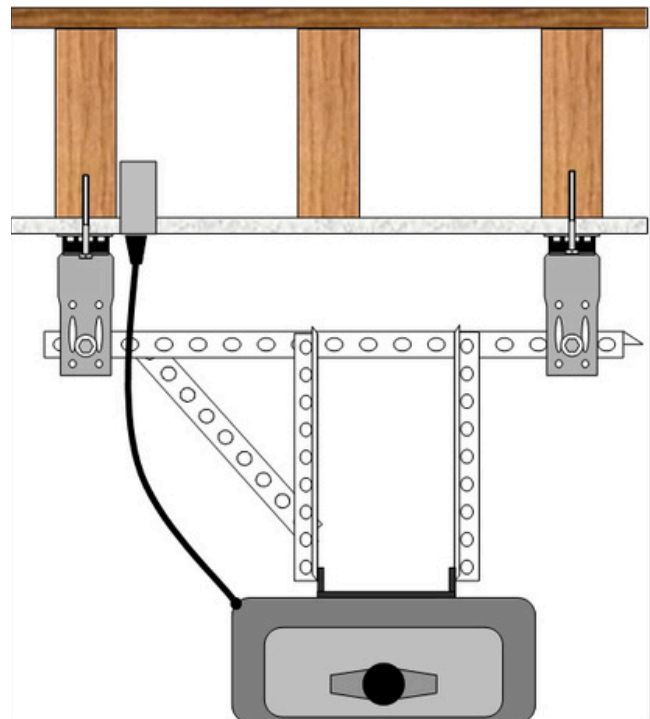
Over the years PAC has heard numerous complaints from customers about garage door motors that produce significant amounts of sounds and vibrations, causing disruption of your household's tranquility.

The RSIC-GDS Garage Door Opener Soundproofing Kit is installed between the ceiling and the operator motor to reduce the amount of vibrations (NOISE) that gets into the structure of your home and the room above. This helps to reduce the loud, sudden noise associated with opening and closing the garage door.

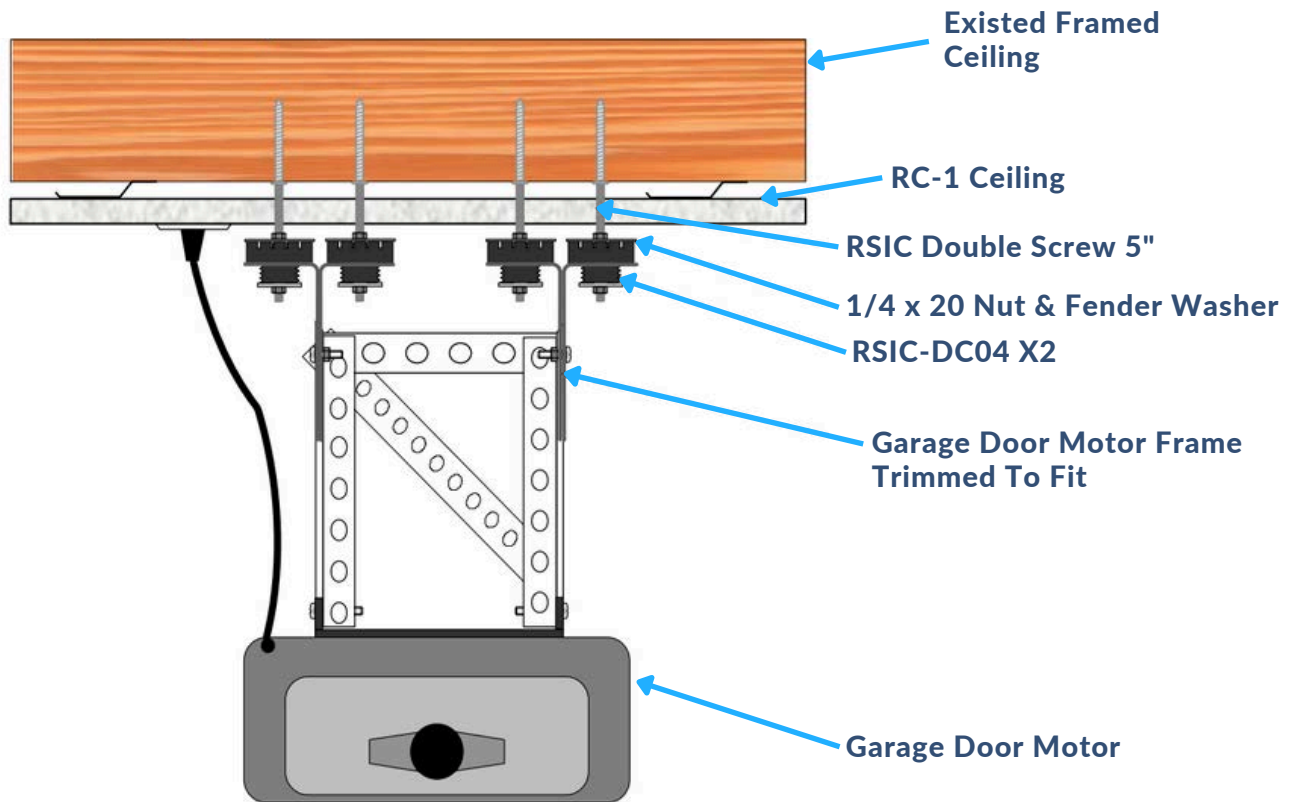
**BEFORE**



**AFTER**

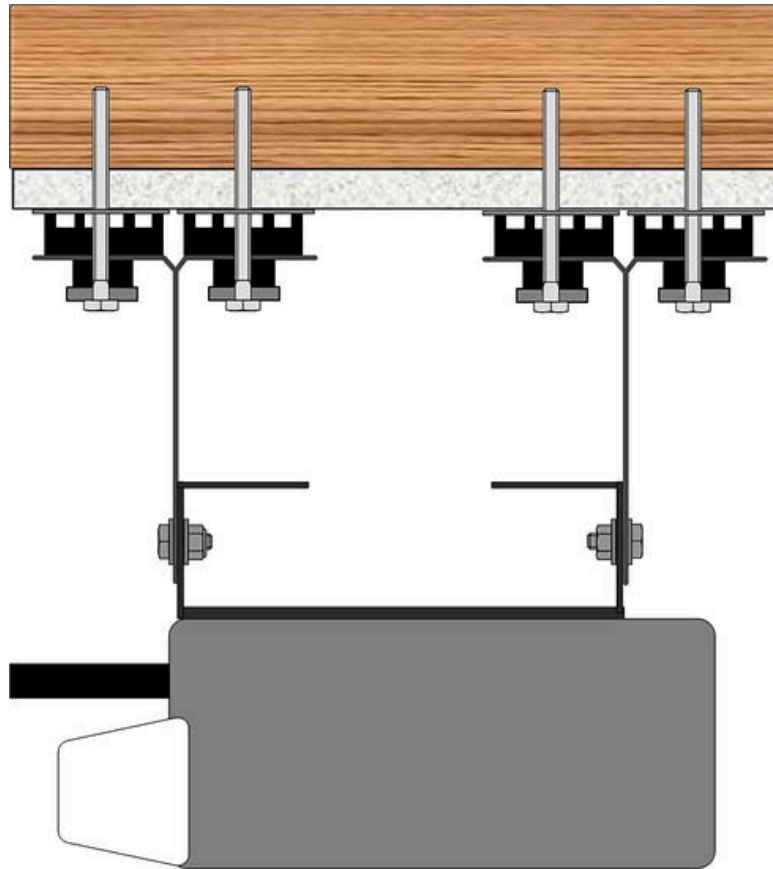


## RSIC-GDS RETROFIT OVER RESILIENT SYSTEMS



### **UNIQUE DESIGN COMPATIBLE WITH RESIDENTIAL GARAGE DOORS**

- Genie
- LiftMaster
- CloPlay
- Amarr
- Overhead Door
- Raynor
- Craftsman
- 1st United Door
- Wayne Dalton
- Chamberlain
- C.H.I Overhead Doors
- Sears
- Unique Garage Door
- Stanley
- Linear



**Reduces the loud, sudden noise associated with opening and closing the garage door**



**Offers quiet solution for existing and new construction**



**Universal design compatible with most residential applications**



**Preserves the tranquility of your home**

