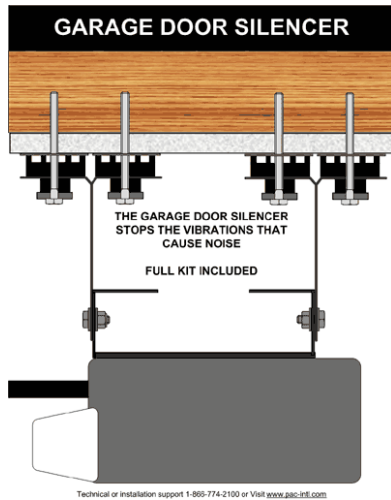


RSIC-GDS KIT SOUND ISOLATION SYSTEM

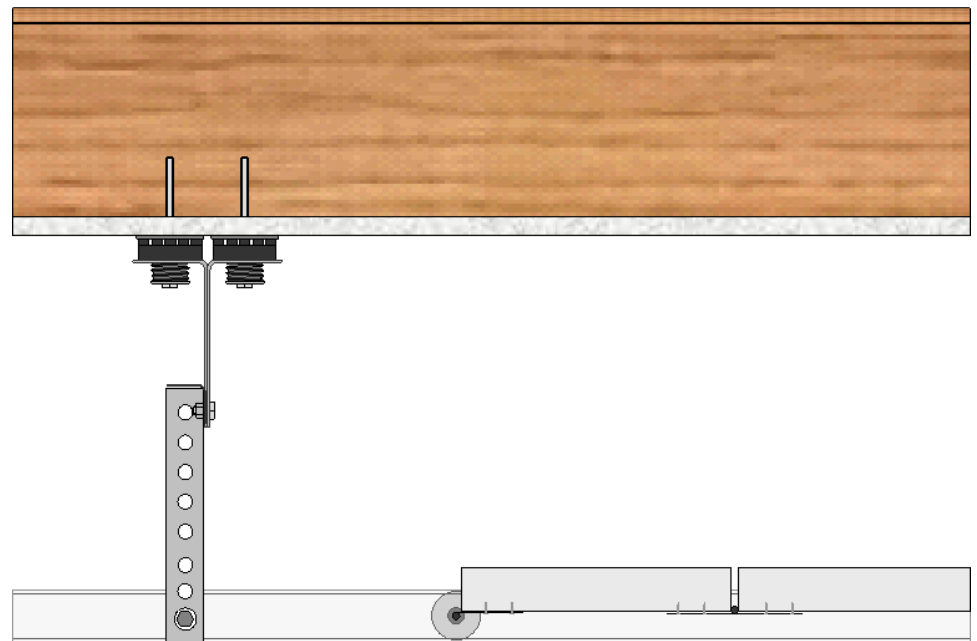
RSIC-GDS KIT



RSIC-GDS Motor Kit

RSIC-GDS Rail Kit

RSIC-GDS Complete Kit

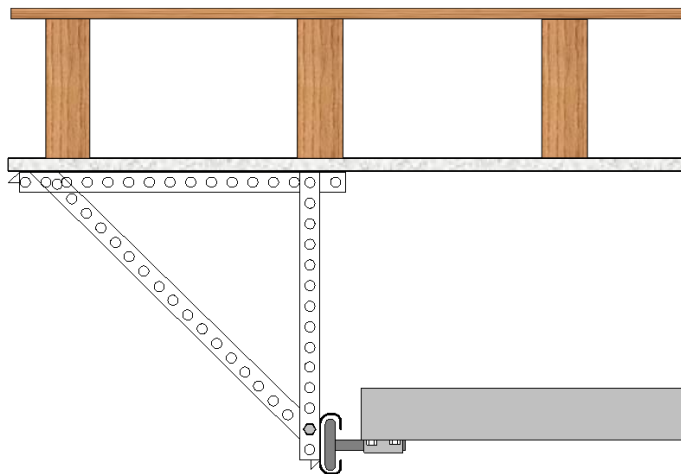


PAC International, Inc. Tel: (866) 774-2100 Technical: (866) 649-2710 Web Site: www.pac-intl.com

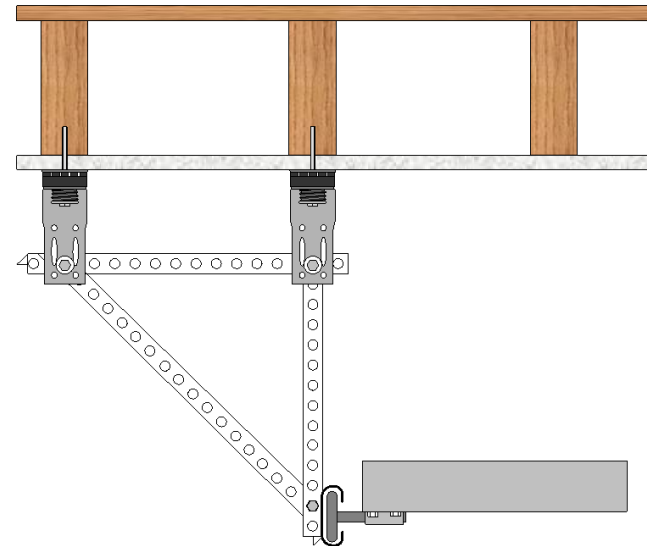
©PAC International, LLC. All Rights Reserved. • (866) 774-2100 • Fax (866) 649-2710
RSIC® is a registered Trade Mark of PAC International, LLC.

RSIC-GDS KIT SOUND ISOLATION SYSTEM

RSIC-Garage Door Motor Kit Isolator Instructions



BEFORE



AFTER

PAC International, Inc. Tel: (866) 774-2100 Technical: (866) 649-2710 Web Site: www.pac-intl.com

©PAC International, LLC. All Rights Reserved. • (866) 774-2100 • Fax (866) 649-2710
RSIC® is a registered Trade Mark of PAC International, LLC.

RSIC-GDS KIT SOUND ISOLATION SYSTEM

RSIC-Garage Door Motor Kit Isolator Instructions

Installation Instructions:

Close Garage Door

Measure distance from ceiling to top of garage door opener motor. Enter measurement here:(_____)

Disconnect power from garage door opener motor.

Support Garage Door Motor with Ladder or stand.

Disconnect metal brackets from the existing garage door motor.

Disconnect metal brackets from ceiling

Install GARAGE DOOR MOTOR SILENCERS using the 1-1/2" flat washers and the 3" hex head screws (screws need to be installed into the joist)

Trim 4" from the bottom of the metal support brackets to compensate for the 4" additional space that the GDS added.

Bolt the metal brackets from step 2 to the GDS motor isolators using the 3/4" bold, 3/4" flat washers, and the 7/16" nyloc nut.

Measure and adjust height of garage door rails using noted measurement taken in step 2.

Reinstall the garage door motor to the metal brackets using the original hardware.

Plug in your garage door opener motor.

Test and adjust if needed.

Repeat steps on other side.

RSIC-GDS Motor Kit Parts List:

2 ea RSIC-GDS Motor Isolators

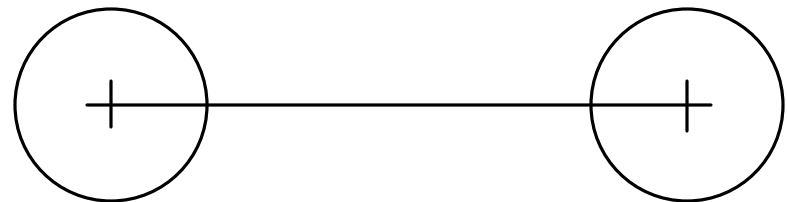
4 ea 3-1/2" coarse thread screws

4 ea RSIC 1-1/2" Fender washers

2 ea 3/4" bolts

2 ea nyloc nuts

4 ea 3/4" washers



PAC International, Inc. Tel: (866) 774-2100 Technical: (866) 649-2710 Web Site: www.pac-intl.com

©PAC International, LLC. All Rights Reserved. • (866) 774-2100 • Fax (866) 649-2710

RSIC® is a registered Trade Mark of PAC International, LLC.

RSIC-GDS KIT SOUND ISOLATION SYSTEM

RSIC-Garage Door Rail Kit Isolator Instructions

Installation Instructions: (This page only needed if you are adding the GDS garage door rail isolator clips to an already existing garage door opener system)

Close Garage Door

Measure distance from ceiling to top of garage door rail. Enter measurement here:(_____)

Disconnect power from garage door opener motor.

Support Garage Door Rail with Ladder or stand.

Disconnect metal brackets from the existing garage door rail.

Disconnect metal brackets from ceiling

Install GARAGE DOOR RAIL SILENCERS using the 1-1/2" flat washers and the 3" hex head screws (screws need to be installed into the joist)

Trim 4" from the bottom of the metal support brackets to compensate for the 4" additional space that the GDS added.

Bolt the metal brackets from step 2 to the GDS rail isolators using the 3/4" bold, 3/4" flat washers, and the 7/16" nyloc nut.

Measure and adjust height of garage door rails using noted measurement taken in step 2.

Reinstall the garage door rails to the metal brackets using the original hardware.

Plug in your garage door opener motor.

Test and adjust if needed.

Repeat steps on other side.

RSIC-GDS Rail Kit Parts List:

4 ea RSIC-Rail Isolators

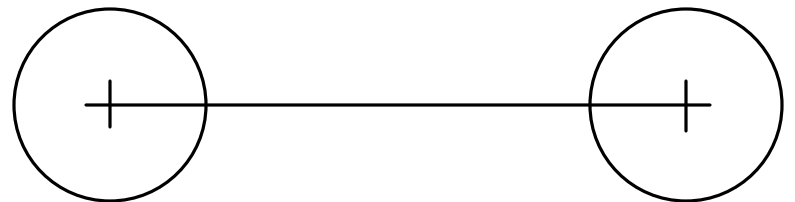
8 ea 3-1/2" coarse thread screws

8 ea RSIC-Retro Fender Washers

4 ea 3/4" long bolts

4 ea nyloc nuts

8 ea 3/4" washers



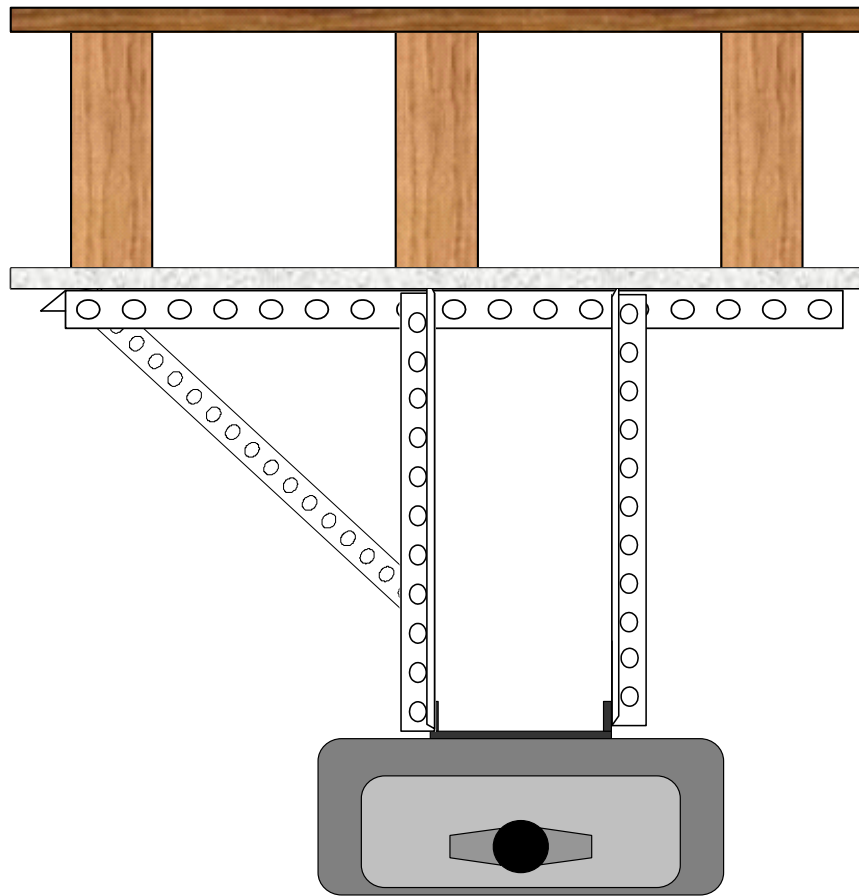
PAC International, Inc. Tel: (866) 774-2100 Technical: (866) 649-2710 Web Site: www.pac-intl.com

©PAC International, LLC. All Rights Reserved. • (866) 774-2100 • Fax (866) 649-2710

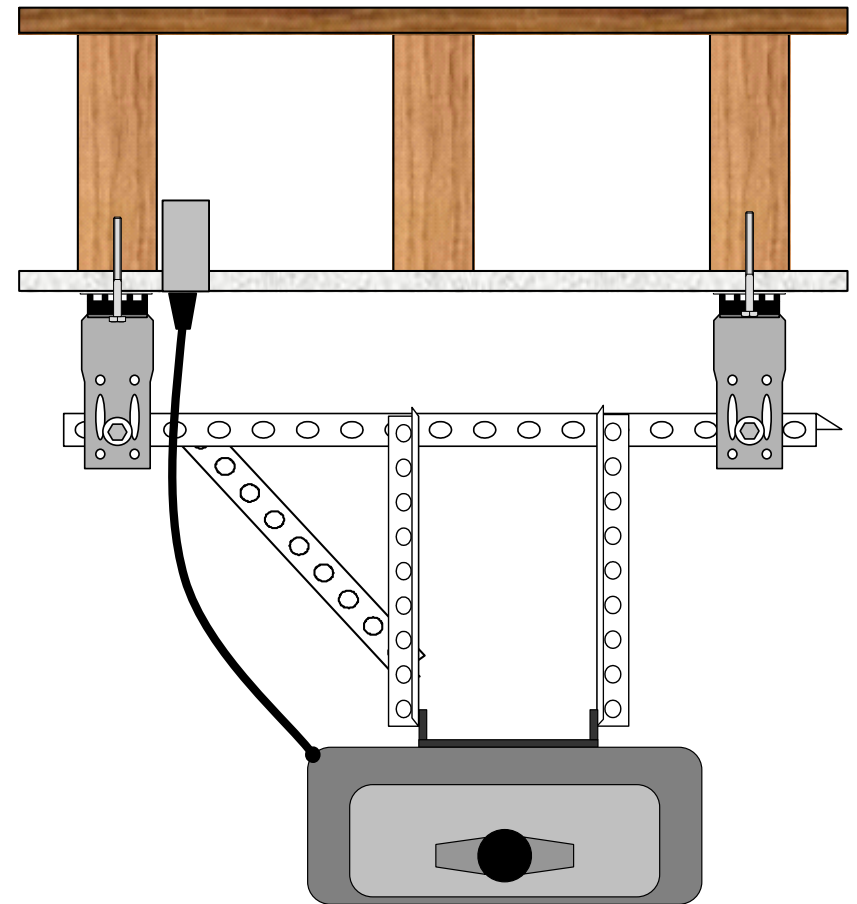
RSIC® is a registered Trade Mark of PAC International, LLC.

RSIC-GDS KIT SOUND ISOLATION SYSTEM

RSIC-Garage Door Motor Kit Isolator Instructions



BEFORE



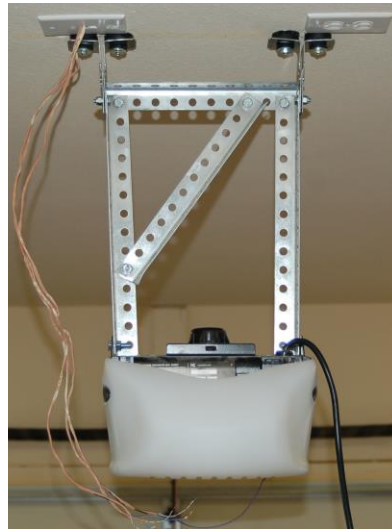
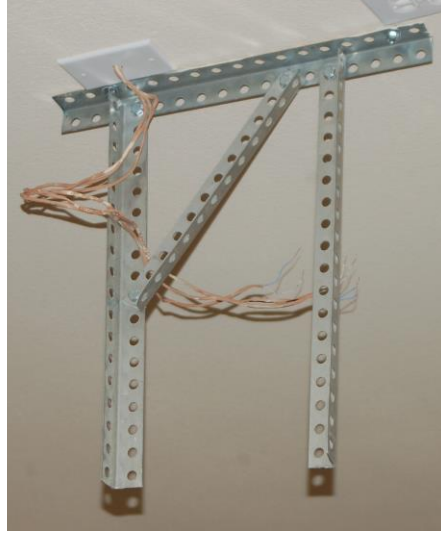
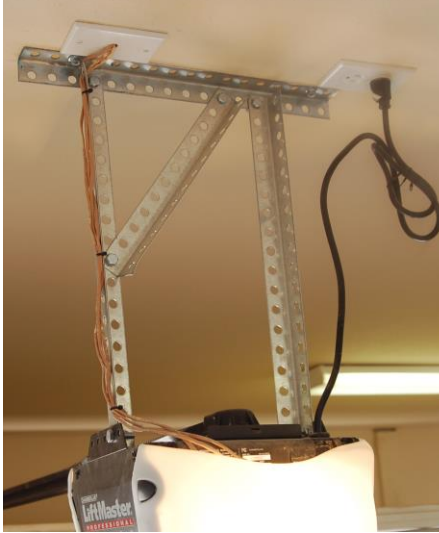
AFTER

PAC International, Inc. Tel: (866) 774-2100 Technical: (866) 649-2710 Web Site: www.pac-intl.com

©PAC International, LLC. All Rights Reserved. • (866) 774-2100 • Fax (866) 649-2710
RSIC® is a registered Trade Mark of PAC International, LLC.

RSIC-GDS KIT SOUND ISOLATION SYSTEM

RSIC-Garage Door Motor Kit Isolator Instructions



PAC International, Inc. Tel: (866) 774-2100 Technical: (866) 649-2710 Web Site: www.pac-intl.com

©PAC International, LLC. All Rights Reserved. • (866) 774-2100 • Fax (866) 649-2710
RSIC® is a registered Trade Mark of PAC International, LLC.