

### TECHNICAL SHEET

#### DESCRIPTION

Finitec MicroConcrete is an easy-to-use product designed to cover various surfaces. Whether it is your walls, fireplace mantels, countertops, floors or other surfaces, MicroConcrete is a very resistant product with an excellent adhesion.

#### IDEAL FOR

Walls  
Fireplace mantels  
Countertops  
Floors  
Outside  
and more...



Highly  
**RESISTANT**

Excellent  
**ADHESION**

**Coverage**  
±4 sq. ft for 400 g  
±35 sq. ft for 3,5 kg  
±180 sq. ft for 18 kg



**Application**  
Trowel  
Taping Knife  
Uppergun



**Easy to use**



**Available sizes**  
400g, 3,5 kg  
and 18 kg



ANTHRACITE



ALUMINUM



PLATINUM



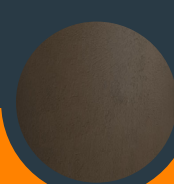
PEARL



CARBON



IVORY



ARABICA

TECHNICAL SHEET

APPLICATION

- 1. Clean the surface with Finitec surface preparation. Do not use the surface preparation on a new, unfinished, or porous surface, such as plywood, MDF, or HDF.
- 2. For a 35 s.f. surface, mix the 3.5 kg bag with 700mL of water and the 18kg bag with 3,6L of water.
- 3. Apply MicroConcrete with a trowel using half-moon or circular motions. After 4 hours or when MicroConcrete is dry to touch, you can apply a second coat if needed.
- 4. After 12 hours sand the surface with 120 or 150 grit paper or remove roughness with a trowel.
- 5. Dry clean with a brush or vacuum cleaner.
- 6. Apply Finitec MicroConcrete sealer. See the application guide for detailed instructions.

NUMBER OF COATS

Surfaces	Number of coats
Walls	1 to 2
Showers	2 or more
Countertops	2 or more
Outside	2 or more

PHYSICAL PROPERTIES

Colors	Aluminum, Anthracite, Carbon, Pearl, Platinum, Ivory and Arabica
VOC	0 g/L
pH	11
Resistance to chemicals	Excellent
Resistance to abrasion	Abrasion ASTM D4060 (wheel H22 for concrete, 1000 cycles) 0,88 g (mass loss)
Drying time (depending on conditions)	Touch : between 1 and 3 hours Recoat : 4 hours Circulation : 12 hours
Flexibility	On HDF 3,2 mm (1/8"), diameter (D) minimal cylinder D > 305 mm (12")
Strength at 28 days	> 20 MPa
Main composition	Portland cement
Density	1,16 kg/L

TECHNICAL DATA

Coverage	±4 sq. ft for 400 g ±35 sq. ft for 3,5 kg ±180 sq. ft for 18 kg
Available sizes	400g, 3,5 kg and 18 kg
Shelflife	2 years (when the bag is well closed and stored in a dry place)
Application tools	Trowel, taping knife or uppergun
Cleaning tool	Water
Storage	Between 10 and 30 °C (50 and 85 °F) Fears humidity
Recommended substrates	MDF, HDF, wood, metal, glass, gypsum, paint, concrete, masonite, ceramic*, laminate, melamine*. The substrate must be in good condition and stable.
Mixing ratio	100g of MicroConcrete for 20 mL of water
Lifetime of the mixture	About 1 hour
Relative humidity	Between 30% and 60%
Application Conditions	Between 10 and 25°C (50 and 77 °F)

\* See instructions for ceramic and melamine.

FIRST AID

Contains Portland cement and sand (crystalline silica). In case of eye contact: Flush eyes with plenty of water for at least 15 minutes. In case of skin contact: Wash exposed and/or contaminated parts thoroughly after handling. If inhaled: Move conscious victim to fresh air. If swallowed: Rinse mouth. Do NOT induce vomiting. Immediately call a poison control center or doctor.

WARNING

- 1. Do not clean the MicroConcrete surface with water or a wet cloth, it will change the color.
- 2. Since MicroConcrete is tinted with natural pigments, coloring may vary from batch to batch. (Mix the 2 bags if you have 2 different batches).